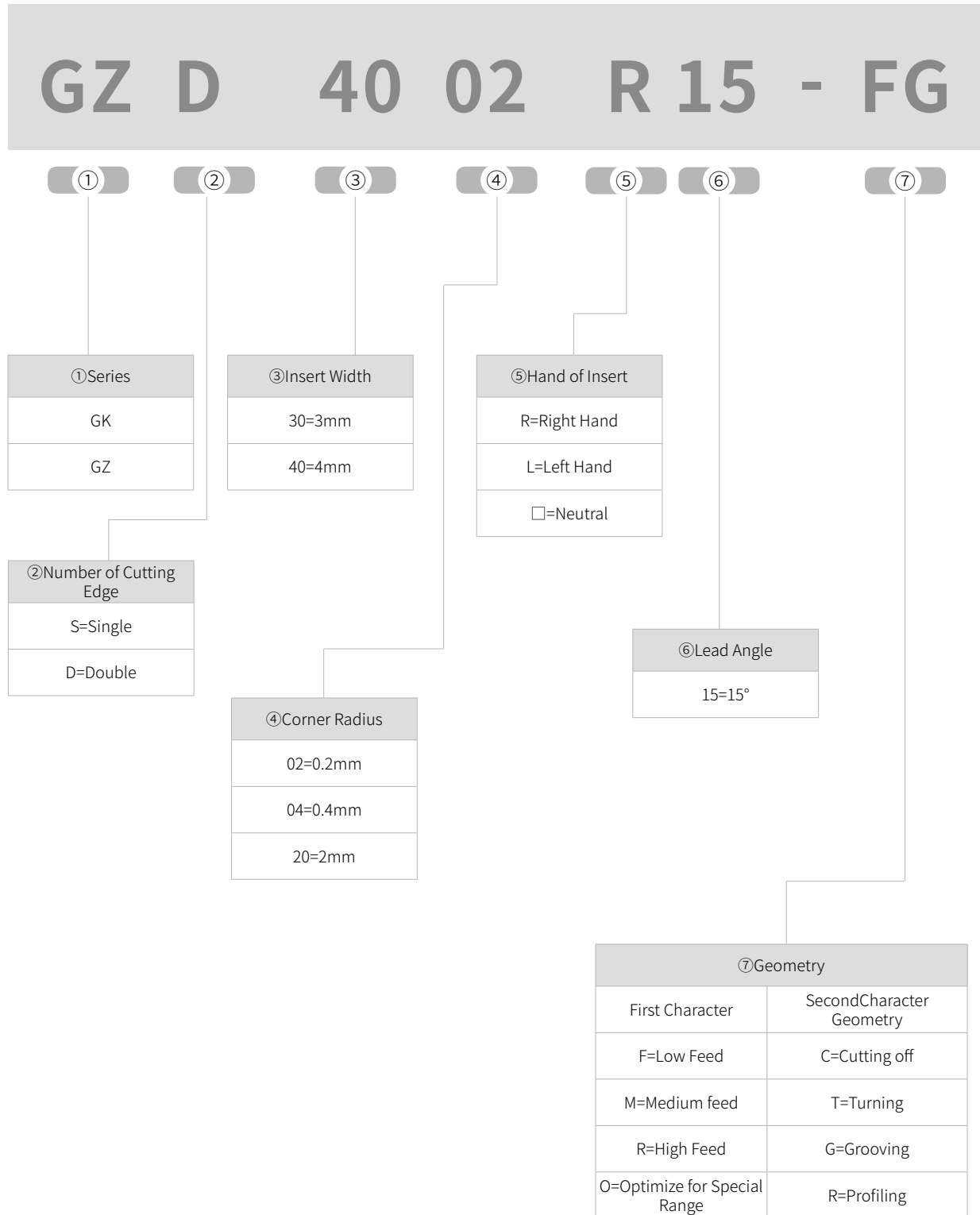


D

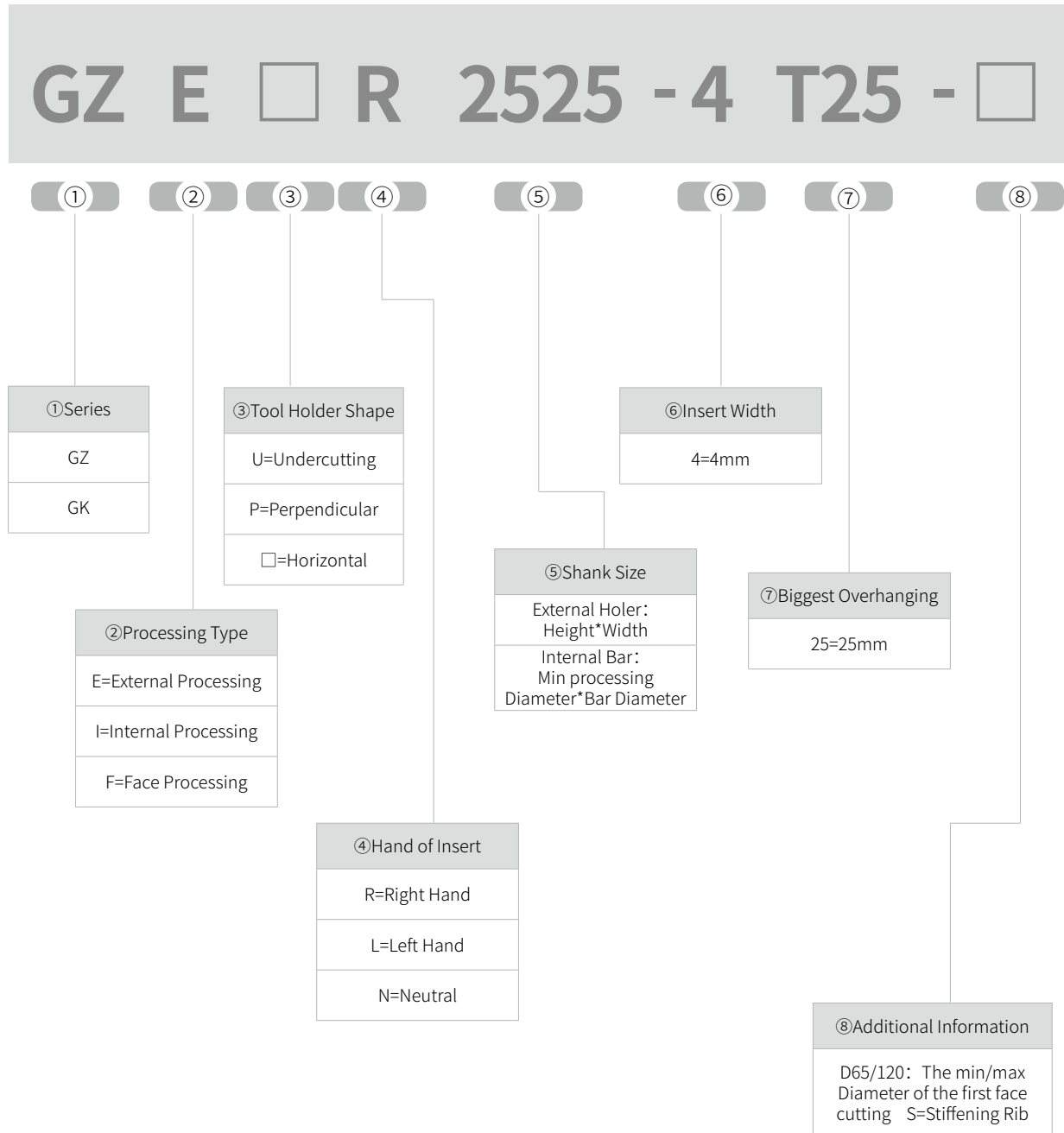
## Parting and Grooving Tools



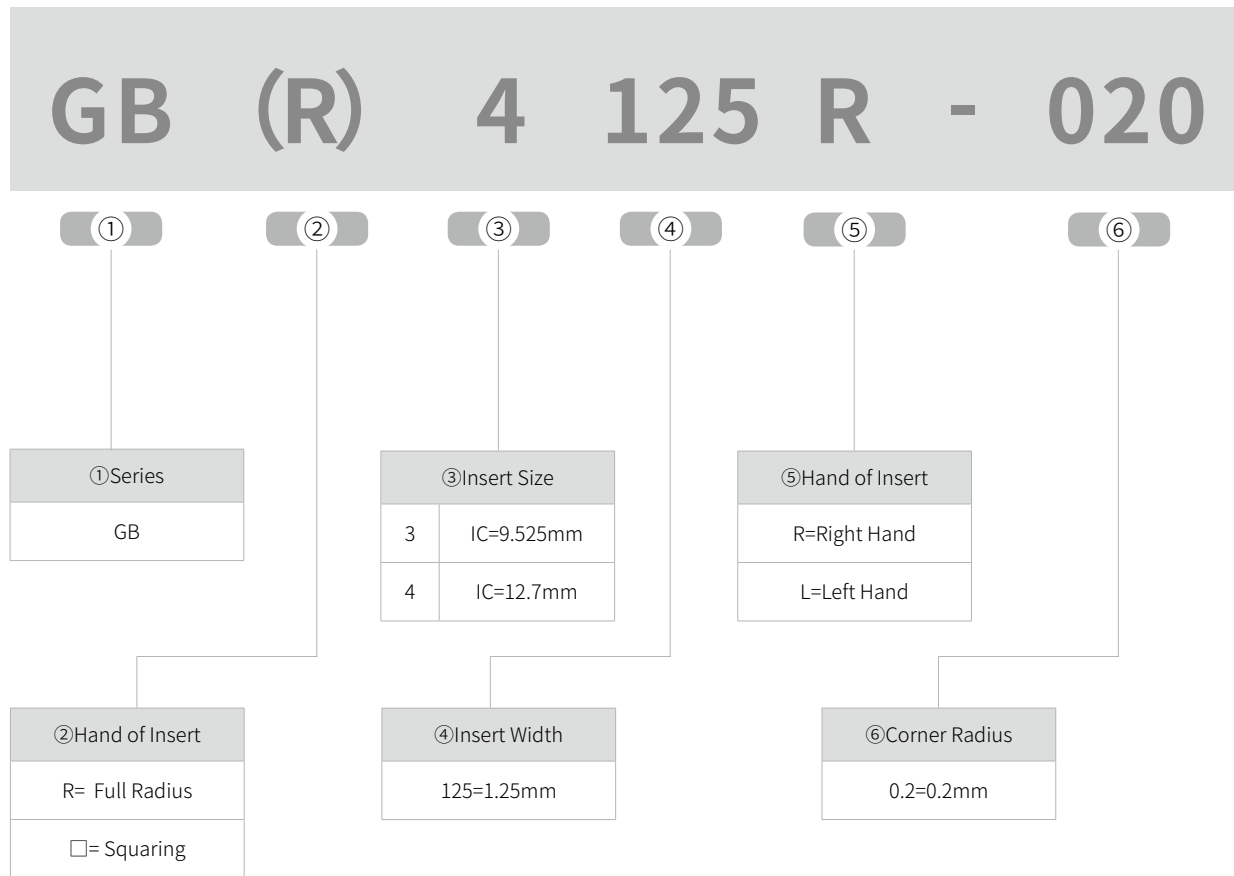
## Parting and Grooving Series Insert Identification System



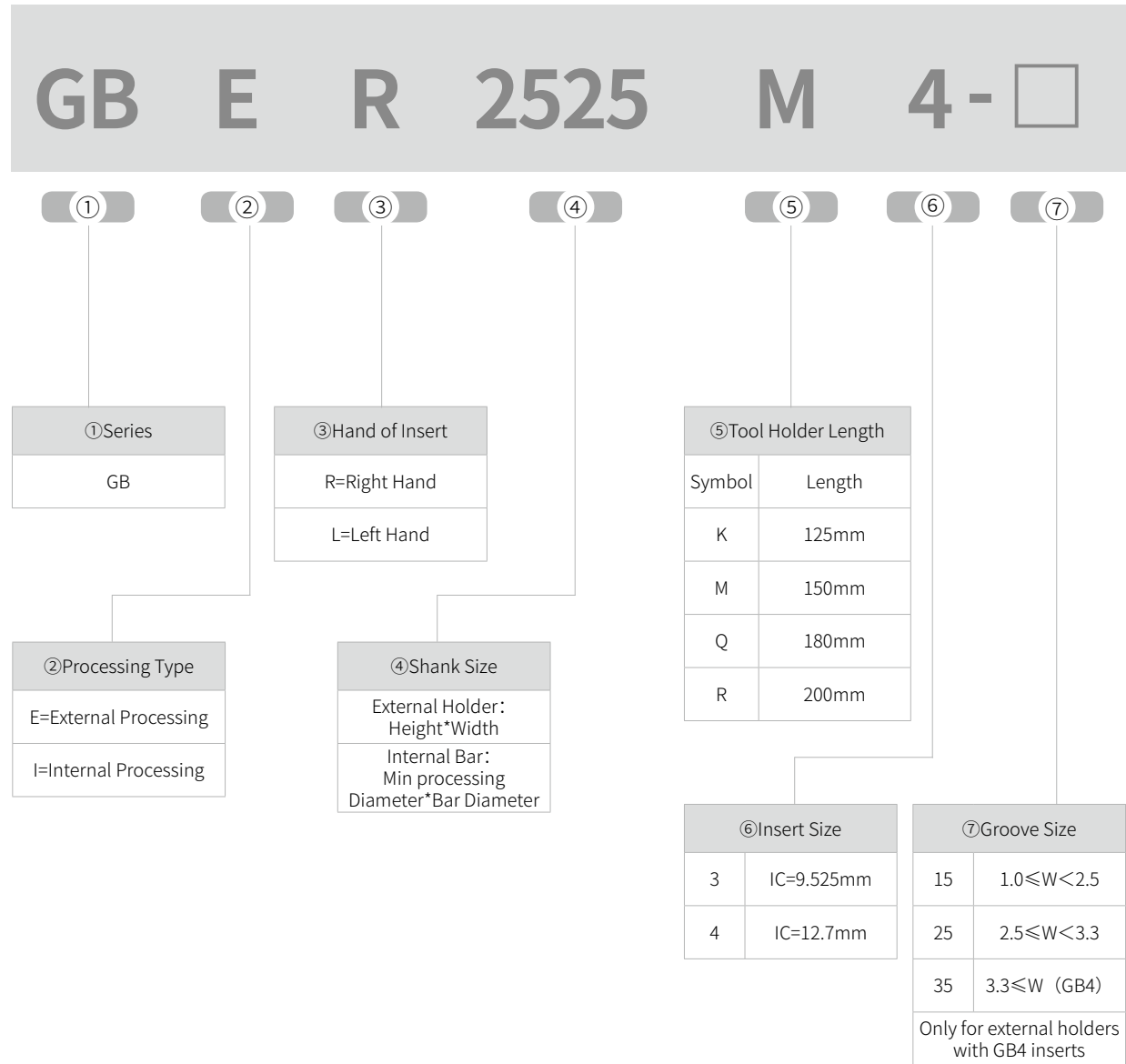
## Parting and Grooving Series Tool Holder Identification System



## GB Series Insert Identification System



## GB Series Tool Holder Identification System



## Overview of Parting and Grooving Inserts

Shape	Geometry	Application	Width	Page
	MT	Medium Turning	2.0-8.0 (mm)	P126
	MR	Medium Profiling	2.0-8.0 (mm)	P126
	FG	Precision Grooving	3.0-6.0 (mm)	P127
	OR	Precision Profiling	3.0-6.0 (mm)	P127
	GB	Precision Grooving	0.5-4.3 (mm)	P128

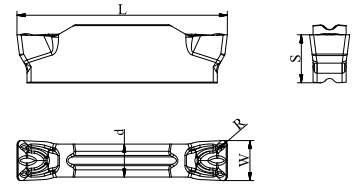
## Grades for Parting and Grooving

Workpiece Material	<b>P</b> Steel					<b>M</b> Stainless Steel					<b>K</b> Cast Iron					<b>S</b> HRSA, Titanium Alloy						
	ISO	01	10	20	30	40	50	01	10	20	30	40	01	10	20	30	40	10	20	30	40	
CVD		GP1105											GK1115									
			GP1225																			
Coated	PVD							GS3115										GS3115				
			GA4230						GA4230				GA4230						GS3125			
Uncoated								GS3125											GS9125			

Parting and Grooving Inserts

# MT

## Medium Turning Inserts



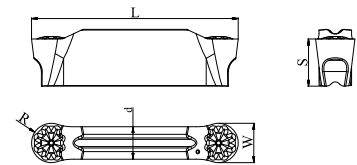
Ordering Code	Dimension					Stock		
	W	R	L	d	S	GP1225	GA4230	GK1115
GKD2002-MT	2.0	0.2	16.0	1.2	3.5	●	●	●
GKD2502-MT	2.5	0.2	18.5	2.0	3.85	●	●	●
GKD3004-MT	3.0	0.4	21.2	2.35	4.8	●	●	●
GKD4004-MT	4.0	0.4	21.0	3.3	4.8	●	●	●
GKD5004-MT	5.0	0.4	26.0	4.1	5.8	●	●	●
GKD5008-MT	5.0	0.8	26.0	4.1	5.8	●	●	●
GKD6004-MT	6.0	0.4	26.0	5.0	5.8	●	●	●
GKD6008-MT	6.0	0.8	26.0	5.0	5.8	●	●	●
GKD8008-MT	8.0	0.8	31.0	6.0	6.5	●	○	●

©For tools, see page130and page134

●Stock ○Available upon order

# MR

## Medium Profiling Inserts



Ordering Code	Dimension					Stock			
	W	R	L	d	S	GP1105	GP1225	GA4230	GK1115
GKD2010-MR	2.0	1.0	16.0	1.2	3.5	●	○	●	●
GKD3015-MR	3.0	1.5	21.2	2.35	4.8	●	○	●	●
GKD4020-MR	4.0	2.0	21.0	3.3	4.8	●	○	●	●
GKD5025-MR	5.0	2.5	26.0	4.1	5.8	●	○	●	●
GKD6030-MR	6.0	3.0	26.0	5.0	5.8	●	○	●	●
GKD8040-MR	8.0	4.0	31.0	6.0	6.5	●	○	●	●

©For tools, see page130and page134

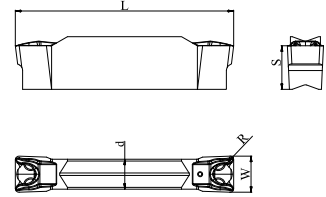
●Stock ○Available upon order



## Parting and Grooving Inserts

**FG**

## Precision Grooving Inserts



Ordering Code	Dimension					Stock	
	W	R	L	d	S	GS3125	GS9125
GZD3002-FG	3.0	0.2	20.4	2.3	4.6	●	●
GZD3004-FG	3.0	0.4	20.4	2.3	4.6	●	●
GZD4002-FG	4.0	0.2	24.0	3.3	4.8	●	●
GZD4004-FG	4.0	0.4	24.0	3.3	4.8	●	●
GZD5002-FG	5.0	0.2	24.0	3.3	4.8	●	●
GZD5004-FG	5.0	0.4	24.0	3.3	4.8	●	●
GZD6002-FG	6.0	0.2	26.0	4.2	4.8	●	●
GZD6004-FG	6.0	0.4	26.0	4.2	4.8	●	●

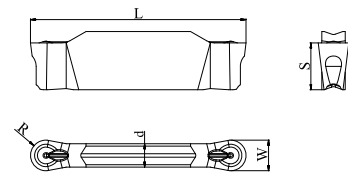


©For tools, see page 135

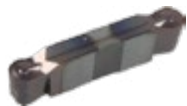
● Stock ○ Available upon order

**OR**

## Precision Profiling Inserts



Ordering Code	Dimension					Stock
	W	R	L	d	S	GS3115
GZD3015-OR	3.0	1.5	21.0	2.3	4.6	●
GZD4020-OR	4.0	2.0	24.0	3.3	4.8	●
GZD5025-OR	5.0	2.5	24.0	3.3	4.8	●
GZD6030-OR	6.0	3.0	21.0	4.2	4.8	●



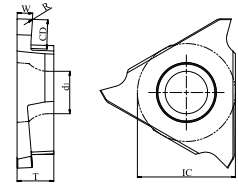
©For tools, see page 135

● Stock ○ Available upon order

Parting and Grooving Inserts

# GB

Precision Profiling Inserts



Ordering Code	Dimension							Stock	
	W	CD	R	IC	T	d1	GA4230		
							R	L	
GB3050R/L-005	0.50	1.0	0.05	9.525	3.18	4.4	●	○	
GB3075R/L-010	0.75	2.0	0.1	9.525	3.18	4.4	●	○	
GB3080R/L-005	0.80	2.0	0.05	9.525	3.18	4.4	●	○	
GB3095R/L-010	0.95	2.0	0.1	9.525	3.18	4.4	●	○	
GB3100R/L-005	1.00	2.0	0.05	9.525	3.18	4.4	●	○	
GB3100R/L-010	1.00	2.0	0.1	9.525	3.18	4.4	●	○	
GB3120R/L-010	1.20	2.0	0.1	9.525	3.18	4.4	●	○	
GB3120R/L-020	1.20	2.0	0.2	9.525	3.18	4.4	●	○	
GB3125R/L-010	1.25	2.0	0.1	9.525	3.18	4.4	●	○	
GB3140R/L-010	1.40	2.0	0.1	9.525	3.18	4.4	●	○	
GB3140R/L-020	1.40	2.0	0.2	9.525	3.18	4.4	●	●	
GB3145R/L-010	1.45	2.0	0.1	9.525	3.18	4.4	●	○	
GB3150R/L-010	1.50	2.0	0.1	9.525	3.18	4.4	●	○	
GB3150R/L-020	1.50	2.0	0.2	9.525	3.18	4.4	●	●	
GB3175R/L-010	1.75	2.0	0.1	9.525	3.18	4.4	●	○	
GB3200R/L-010	2.00	2.5	0.1	9.525	3.18	4.4	●	○	
GB3200R/L-020	2.00	2.5	0.2	9.525	3.18	4.4	●	●	
GB3250R/L-010	2.50	2.5	0.1	9.525	3.18	4.4	●	○	
GB3250R/L-020	2.50	2.5	0.2	9.525	3.18	4.4	●	●	
GB3300R/L-020	3.00	2.5	0.2	9.525	3.18	4.4	●	●	



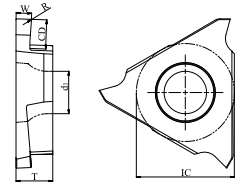
©For tools, see page 136 and page 137

● Stock ○ Available upon order

## Parting and Grooving Inserts

**GB**

Precision Grooving Inserts



Ordering Code	Dimension						Stock	
	W	CD	R	IC	T	d1	GA4230	
							R	L
GB4125R/L -020	1.25	2.0	0.2	12.7	4.76	5.5	●	●
GB4150R/L -010	1.50	3.5	0.1	12.7	4.76	5.5	●	○
GB4150R/L -020	1.50	3.5	0.2	12.7	4.76	5.5	●	●
GB4175R/L -020	1.75	3.5	0.2	12.7	4.76	5.5	●	○
GB4185R/L -020	1.85	3.5	0.2	12.7	4.76	5.5	●	●
GB4200R/L -005	2.00	3.5	0.05	12.7	4.76	5.5	●	○
GB4200R/L -010	2.00	3.5	0.1	12.7	4.76	5.5	●	○
GB4200R/L -020	2.00	3.5	0.2	12.7	4.76	5.5	●	●
GB4200R/L -030	2.00	3.5	0.3	12.7	4.76	5.5	●	○
GB4200R/L -050	2.00	3.5	0.5	12.7	4.76	5.5	●	○
GB4210R/L -050	2.10	4.0	0.5	12.7	4.76	5.5	●	○
GB4220R/L -030	2.20	4.0	0.3	12.7	4.76	5.5	●	○
GB4235R/L -050	2.35	4.0	0.5	12.7	4.76	5.5	●	○
GB4240R/L -050	2.40	4.0	0.5	12.7	4.76	5.5	●	○
GB4250R/L -030	2.50	4.0	0.3	12.7	4.76	5.5	●	●
GB4265R/L -030	2.65	4.0	0.3	12.7	4.76	5.5	●	○
GB4280R/L -030	2.80	5.0	0.3	12.7	4.76	5.5	●	○
GB4300R/L -030	3.00	4.0	0.3	12.7	4.76	5.5	●	●
GB4330R/L -030	3.30	5.0	0.3	12.7	4.76	5.5	●	○
GB4350R/L -030	3.50	5.0	0.3	12.7	4.76	5.5	●	●
GB4400R/L -040	4.00	5.0	0.4	12.7	4.76	5.5	●	●
GB4430R/L -040	4.30	5.0	0.4	12.7	4.76	5.5	●	○
GBR4100R/L -050	1.00	2.0	0.5	12.7	4.76	5.5	●	●
GBR4150R/L -075	1.50	3.5	0.75	12.7	4.76	5.5	●	●
GBR4200R/L -100	2.00	3.5	1.0	12.7	4.76	5.5	●	●
GBR4250R/L -125	2.50	4.0	1.25	12.7	4.76	5.5	●	●
GBR4300R/L -150	3.00	4.0	1.5	12.7	4.76	5.5	●	●
GBR4400R/L -200	4.00	5.0	2.0	12.7	4.76	5.5	●	●

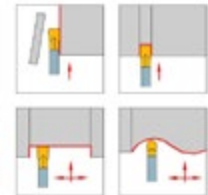
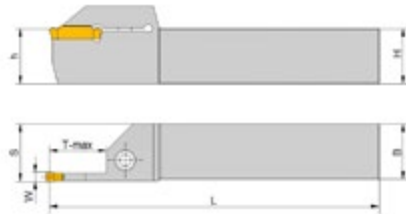
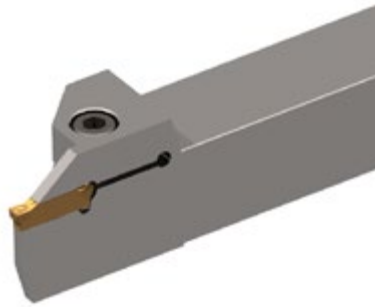


©For tools, see page 136 and page 137

● Stock ○ Available upon order

GK Series

External Holders for Parting, Grooving, Turning and Profiling



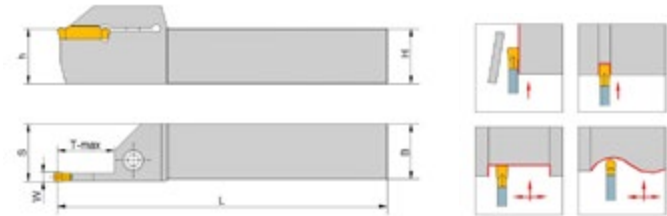
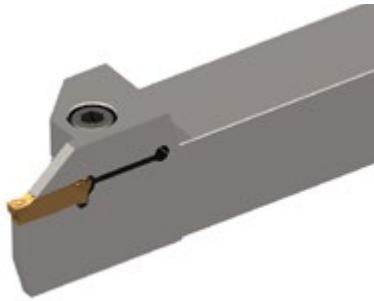
The Picture is Right Hand Holder

Ordering Code	Stock		Inserts	Dimension(mm)						Screw	Wrench
	R	L		W	T-max	H=h	B	L	S		
GKER/L1616-2T14	●	●	GKD20...	2.0	14	16	16	100	17	SCAM050120H	TH40LH
GKER/L2020-2T14	●	●	GKD20...	2.0	14	20	20	125	21	SCAM050200H	TH40LH
GKER/L2525-2T14	●	●	GKD20...	2.0	14	25	25	150	26	SCAM060200H	TH50LH
GKER/L1616-2.5T16	●	●	GKD25...	2.5	16	16	16	100	17	SCAM050120H	TH40LH
GKER/L2020-2.5T16	●	●	GKD25...	2.5	16	20	20	125	21	SCAM050200H	TH40LH
GKER/L2525-2.5T16	●	●	GKD25...	2.5	16	25	25	150	26	SCAM060200H	TH50LH
GKER/L1616-3T18	●	●	GKD30...	3.0	18	16	16	100	17	SCAM050120H	TH40LH
GKER/L2020-3T18	●	●	GKD30...	3.0	18	20	20	125	21	SCAM050200H	TH40LH
GKER/L2020-3T10	○	○	GKD30...	3.0	10	20	20	125	21	SCAM050200H	TH40LH
GKER/L2525-3T18	●	●	GKD30...	3.0	18	25	25	150	26	SCAM060200H	TH50LH
GKER/L2525-3T10	○	○	GKD30...	3.0	10	25	25	150	26	SCAM060200H	TH50LH
GKER/L3225-3T18	●	●	GKD30...	3.0	18	32	25	170	26	SCAM060200H	TH50LH
GKER/L3232-3T18	●	●	GKD30...	3.0	18	32	32	170	33	SCAM060200H	TH50LH
GKER/L3232-3T10	○	○	GKD30...	3.0	10	32	32	170	33	SCAM060200H	TH50LH
GKER/L2020-4T18	●	●	GKD40...	4.0	18	20	20	125	21	SCAM050200H	TH40LH
GKER/L2020-4T10	○	○	GKD40...	4.0	10	20	20	125	21	SCAM050200H	TH40LH
GKER/L2525-4T18	●	●	GKD40...	4.0	18	25	25	150	26	SCAM060200H	TH50LH
GKER/L2525-4T10	○	○	GKD40...	4.0	10	25	25	150	26	SCAM060200H	TH50LH
GKER/L3225-4T18	●	●	GKD40...	4.0	18	32	25	170	26	SCAM060200H	TH50LH
GKER/L3232-4T18	●	●	GKD40...	4.0	18	32	32	170	33	SCAM060200H	TH50LH
GKER/L3232-4T10	○	○	GKD40...	4.0	10	32	32	170	33	SCAM060200H	TH50LH

©For tools, see page 126

## GK Series

## External Holders for Parting, Grooving, Turning and Profiling



The Picture is Right Hand Holder

续前

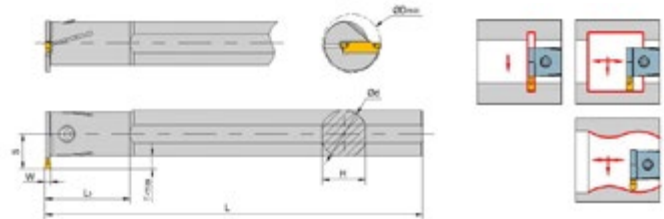
Ordering Code	Stock		Inserts	Dimension(mm)						Screw	Wrench
	R	L		W	T-max	H=h	B	L	S		
GKER/L2020-5T23	●	●	GKD50...	5.0	23	20	20	125	21	SCAM050200H	TH40LH
GKER/L2020-5T15	○	○	GKD50...	5.0	15	20	20	125	21	SCAM050200H	TH40LH
GKER/L2525-5T23	●	●	GKD50...	5.0	23	25	25	150	26	SCAM060200H	TH50LH
GKER/L2525-5T15	○	○	GKD50...	5.0	15	25	25	150	26	SCAM060200H	TH50LH
GKER/L3225-5T23	●	●	GKD50...	5.0	23	32	25	170	26	SCAM060200H	TH50LH
GKER/L3232-5T23	●	●	GKD50...	5.0	23	32	32	170	33	SCAM060200H	TH50LH
GKER/L3232-5T15	○	○	GKD50...	5.0	15	32	32	170	33	SCAM060200H	TH50LH
GKER/L2020-6T23	●	●	GKD60...	6.0	23	20	20	125	21	SCAM050200H	TH40LH
GKER/L2020-6T15	○	○	GKD60...	6.0	15	20	20	125	21	SCAM050200H	TH40LH
GKER/L2525-6T23	●	●	GKD60...	6.0	23	25	25	150	26	SCAM060200H	TH50LH
GKER/L2525-6T15	○	○	GKD60...	6.0	15	25	25	150	26	SCAM060200H	TH50LH
GKER/L3225-6T23	●	●	GKD60...	6.0	23	32	25	170	26	SCAM060200H	TH50LH
GKER/L3232-6T23	●	●	GKD60...	6.0	23	32	32	170	33	SCAM060200H	TH50LH
GKER/L3232-6T15	○	○	GKD60...	6.0	15	32	32	170	33	SCAM060200H	TH50LH
GKER/L2525-8T28	●	●	GKD80...	8.0	28	25	25	150	26.5	SCAM060200H	TH50LH
GKER/L2525-8T15	○	○	GKD80...	8.0	15	25	25	150	26.5	SCAM060200H	TH50LH
GKER/L3232-8T28	●	●	GKD80...	8.0	28	32	32	170	33.5	SCAM060200H	TH50LH
GKER/L3232-8T15	○	○	GKD80...	8.0	15	32	32	170	33.5	SCAM060200H	TH50LH

©For tools, see page 126

● Stock ○ Available upon order

GK Series

Internal Bars for Grooving, Turning and Profiling



The Picture is Right Hand Holder

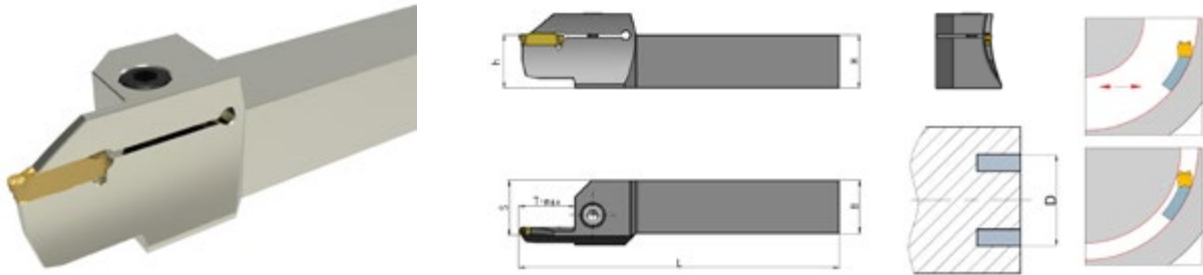
Ordering Code	Stock		Inserts	Dimension(mm)								Screw	Wrench
	R	L		W	T-max	ΦDmin	Φd	S	L	L1	H		
GKIR/L2016-2T04	●	●	GKD20...	2.0	4	20	16	12	125	35	15	SCAM040100H	TH30LH
GKIR/L2520-2T05	●	●	GKD20...	2.0	5	25	20	14.5	150	45	18	SCAM040120H	TH30LH
GKIR/L2925-2T05	●	●	GKD20...	2.0	5	29	25	17	200	45	23	SCAM050120H	TH40LH
GKIR/L2520-2.5T05	●	●	GKD25...	2.5	5	25	20	14.5	150	45	18	SCAM040120H	TH30LH
GKIR/L2925-2.5T05	●	●	GKD25...	2.5	5	29	25	17	200	45	23	SCAM050120H	TH40LH
GKIR/L2520-3T06	●	●	GKD30...	3.0	6	25	20	15.5	150	45	18	SCAM040120H	TH30LH
GKIR/L3125-3T06	●	●	GKD30...	3.0	6	31	25	18.5	200	45	23	SCAM050120H	TH40LH
GKIR/L3732-3T06	●	●	GKD30...	3.0	6	37	32	21.5	250	65	30	SCAM050200H	TH40LH
GKIR/L2520-4T06	●	●	GKD40...	4.0	6	25	20	15.5	150	45	18	SCAM040120H	TH30LH
GKIR/L3125-4T06	●	●	GKD40...	4.0	6	31	25	18.5	200	45	23	SCAM050120H	TH40LH
GKIR/L3732-4T06	●	●	GKD40...	4.0	6	37	32	21.5	250	65	30	SCAM050200H	TH40LH
GKIR/L3125-5T08	●	●	GKD50...	5.0	8	31	25	19.5	200	45	23	SCAM050120H	TH40LH
GKIR/L3732-5T08	●	●	GKD50...	5.0	8	37	32	21.5	250	65	30	SCAM050200H	TH40LH
GKIR/L3125-6T08	●	●	GKD60...	6.0	8	31	25	19.5	200	45	23	SCAM050120H	TH40LH
GKIR/L3732-6T08	●	●	GKD60...	6.0	8	37	32	21.5	250	65	30	SCAM050200H	TH40LH
GKIR/L3732-8T10	●	●	GKD80...	8.0	10	37	32	23.4	250	65	30	SCAM050200H	TH40LH
GKIR/L4540-8T10	●	●	GKD80...	8.0	10	45	40	27.2	300	70	37	SCAM050200H	TH40LH

©For tools, see page 126

● Stock ○ Available upon order

## GK Series

## Face Grooving Holders-Horizontal



The Picture is Right Hand Holder

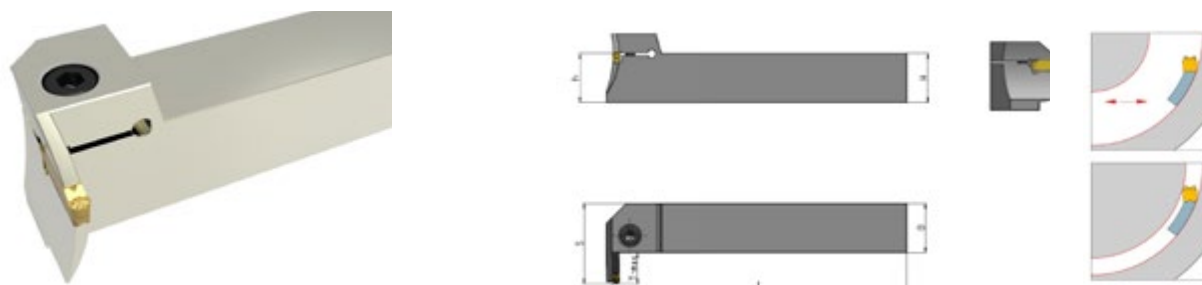
Ordering Code	Stock		Inserts	Dimension(mm)							Screw	Wrench
	R	L		H=h	B	L	S	T-max	Dmin	Dmax		
GKFR/L2525-2T12D75	○	○	GKD20...	25	25	150	26	15	75	100	SCAM060200H	TH50LH
GKFR/L2525-2T12D90	○	○	GKD20...	25	25	150	26	15	90	150	SCAM060200H	TH50LH
GKFR/L2525-3T15D68	○	○	GKD30...	25	25	150	26	15	68	100	SCAM060200H	TH50LH
GKFR/L2525-3T15D90	○	○	GKD30...	25	25	150	26	15	90	160	SCAM060200H	TH50LH
GKFR/L2525-4T15D62	●	●	GKD40...	25	25	150	26	15	62	120	SCAM060200H	TH50LH
GKFR/L2525-4T15D112	●	●	GKD40...	25	25	150	26	15	112	200	SCAM060200H	TH50LH
GKFR/L2525-5T25D68	○	○	GKD50...	25	25	150	26	25	68	95	SCAM060200H	TH50LH
GKFR/L2525-5T25D85	○	○	GKD50...	25	25	150	26	25	85	130	SCAM060200H	TH50LH
GKFR/L2525-6T25D68	○	○	GKD60...	25	25	150	26	25	68	100	SCAM060200H	TH50LH
GKFR/L2525-6T25D88	○	○	GKD60...	25	25	150	26	25	88	180	SCAM060200H	TH50LH
GKFR/L2525-8T25D45	○	○	GKD80...	25	25	150	26	25	45	80	SCAM060200H	TH50LH
GKFR/L2525-8T25D75	○	○	GKD80...	25	25	150	26	25	75	150	SCAM060200H	TH50LH

©For tools, see page 126

● Stock ○ Available upon order

GK Series

Face Grooving Holders-Perpendicular



The Picture is Right Hand Holder

Ordering Code	Stock		Inserts	Dimension(mm)						Screw	Wrench	
	R	L		H=h	B	L	S	T-max	Dmin			Dmax
GKFPR/L2525-4T15D60	●	●	GKD40...	25	25	150	26	15	60	120	SCAM060200H	TH50LH
GKFPR/L2525-4T15D112	●	●	GKD40...	25	25	150	26	15	112	200	SCAM060200H	TH50LH

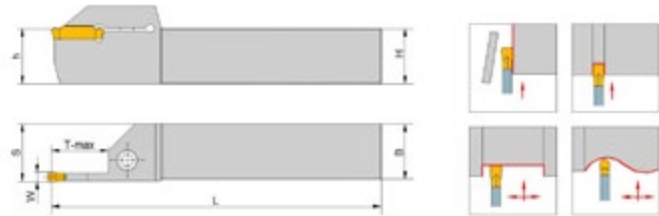
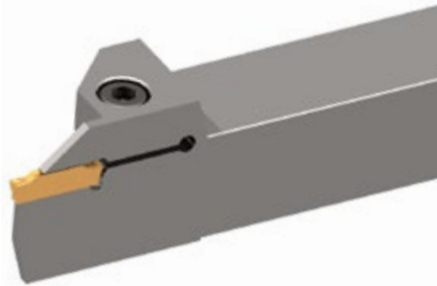
●Stock ○Available upon order

©For tools,see page 127



## GZ Series

## External Holders for Parting, Grooving, Turning and Profiling



The Picture is Right Hand Holder

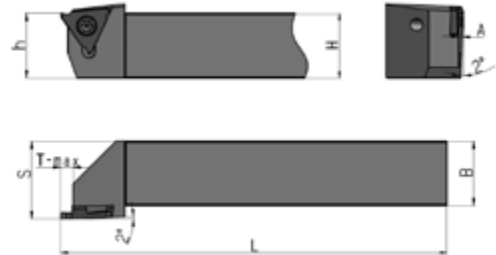
Ordering Code	Stock		适用刀片	Dimension(mm)						Screw	Wrench
	R	L		W	T-max	H=h	B	L	S		
GZER/L2020-3T20	●	●	GZD30...	3.0	20	20	20	125	21	SCAM050200H	TH40LH
GZER/L2525-3T20	●	●	GZD30...	3.0	20	25	25	150	26	SCAM060200H	TH50LH
GZER/L3225-3T20	●	●	GZD30...	3.0	20	32	25	170	26	SCAM060200H	TH50LH
GZER/L2020-4T25	●	●	GZD40...	4.0	25	20	20	125	21	SCAM050200H	TH40LH
			GZD50...	5.0	25	20	20	125	21.5		
GZER/L2525-4T25	●	●	GZD40...	4.0	25	25	25	150	26	SCAM060200H	TH50LH
			GZD50...	5.0	25	25	25	150	26.5		
GZER/L3225-4T25	●	●	GZD40...	4.0	25	32	25	170	26	SCAM060200H	TH50LH
			GZD50...	5.0	25	32	25	170	26.5		
GZER/L2525-6T32	●	●	GZD60...	6.0	32	25	25	150	26	SCAM060300H	TH50LH
GZER/L3225-6T32	●	●	GZD60...	6.0	32	32	25	170	26	SCAM060300H	TH50LH

©For tools, see page 127

● Stock ○ Available upon order

GB Series

External Holders for Grooving



The Picture is Right Hand Holder

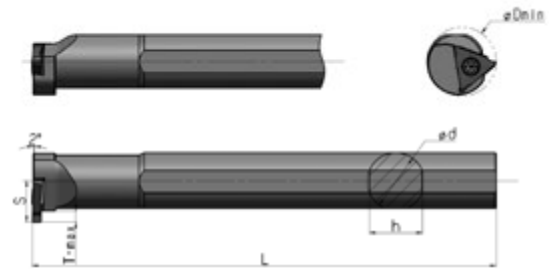
Ordering Code	Stock		Inserts	Dimension(mm)						Screw	Wrench
	R	L		H=h	B	L	S	A	T-max		
GBER/L2020K3	●	○	3...	20	20	125	25	—	2.5	SI60M 035120...	TT15P...
GBER/L2525M3	●	○	3...	25	25	150	30	—	2.5	SI60M 035120...	TT15P...
GBER/L2020K4-15	●	○	4... (1.0 ≤ W < 2.5)	20	20	125	25	1.0	4.0	SI60M 050120...	TT20P...
GBER/L2525M4-15	●	○	4... (1.0 ≤ W < 2.5)	25	25	150	30	1.0	4.0	SI60M 050120...	TT20P...
GBER/L2020K4-25	●	○	4... (2.5 ≤ W < 3.3)	20	20	125	25	2.0	4.5	SI60M 050120...	TT20P...
GBER/L2525M4-25	●	○	4... (2.5 ≤ W < 3.3)	25	25	150	30	2.0	4.5	SI60M 050120...	TT20P...
GBER/L2020K4-35	●	○	4... (3.3 ≤ W < 4.8)	20	20	125	25	3.0	5.5	SI60M 050120...	TT20P...
GBER/L2525M4-35	●	○	4... (3.3 ≤ W < 4.8)	25	25	150	30	3.0	5.5	SI60M 050120...	TT20P...

Remark: SI60M 035120... is meaning of M3.5x9  
 ©For tools, see page 128 and page 129

● Stock ○ Available upon order

GB Series

## Internal Bars for Grooving



The Picture is Right Hand Holder

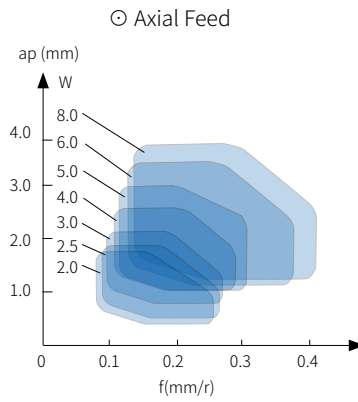
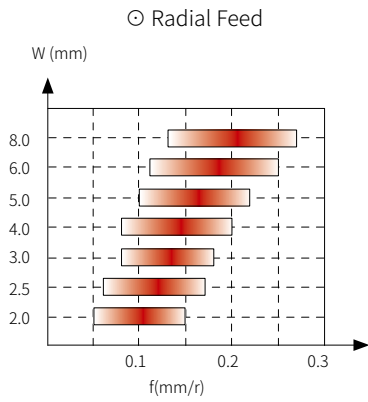
Ordering Code	Stock		Inserts	Dimension(mm)						Screw	Wrench
	R	L		Dmin	$\phi d$	h	L	A	T-max		
GBIR/L2620Q3	●	●	3...	26	20	18	180	13	3	SI60M 035120...	TT15P...
GBIR/L3525R4	●	●	4...	35	25	23	200	17.5	4.5	SI60M 050120...	TT20P...

Remark: SI60M 035120...is meaning of M3.5x9  
 ©For tools,see page 128 and page 129

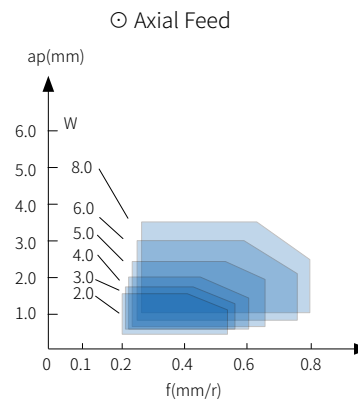
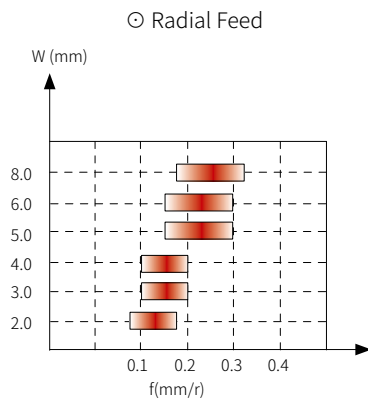
●Stock ○Available upon order

## Recommended Feed

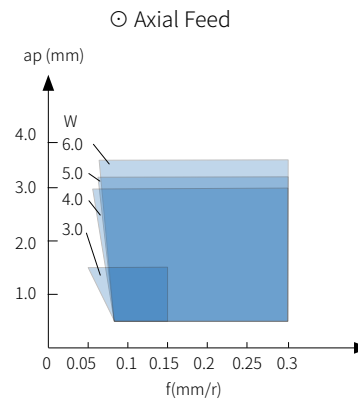
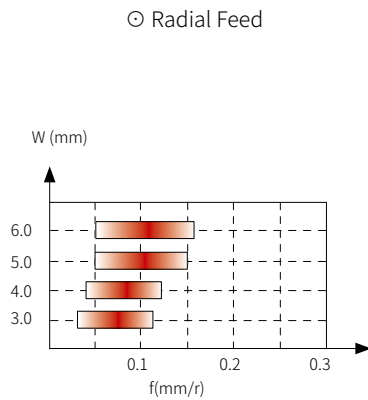
### MT



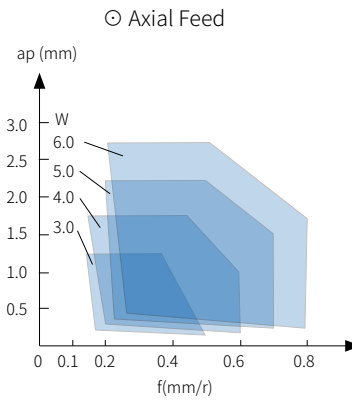
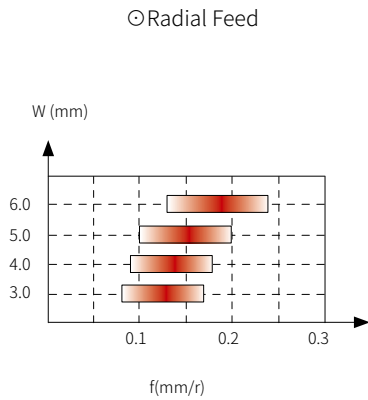
### MR



### FG



## OR



## GB

Workpiece Material	feed (mm/r)				
	width (mm)				
	0.5-1.0	1.0-2.0	2.5-3.0	3.3-4.0	4.0-4.3
<b>P</b> Carbon Steel	①.0.03~0.08	①.0.04~0.09 ②.0.04~0.09	①.0.05~0.1 ②.0.05~0.1	①.0.05~0.12 ②.0.05~0.1	①.0.05~0.12 ②.0.05~0.1
	Alloy Steel	①.0.03~0.07	①.0.04~0.08 ②.0.04~0.08	①.0.05~0.9 ②.0.05~0.9	①.0.05~0.1 ②.0.05~0.1
<b>M</b> Stainless Steel	①.0.03~0.07	①.0.04~0.08 ②.0.04~0.08	①.0.05~0.9 ②.0.05~0.9	①.0.05~0.1 ②.0.05~0.1	①.0.05~0.1 ②.0.05~0.1
<b>K</b> Cast Iron	①.0.03~0.08	①.0.04~0.09 ②.0.04~0.09	①.0.05~0.1 ②.0.05~0.1	①.0.05~0.12 ②.0.05~0.1	①.0.05~0.12 ②.0.05~0.1

① Radial Fe ② Axial Feed

## Recommended Cutting Speed

WorkpieceMaterial	Hardness (HB)	Cutting Speed Vc (m/min)						
		GA4230	GP1225	GP1105	GK1115	GS3115	GS3125	GS9125
Low Carbon Steel	80 – 170	110 (70-180)	120 (80-220)	120 (80-220)		70 (50-100)	70 (50-100)	
High Carbon Steel	170 – 250	110 (70-150)	120 (80-220)	120 (80-220)				
<b>P</b> Low-alloy Steel	140– 260	110 (40-150)	110 (60-180)	110 (60-180)		70 (50-100)	70 (50-100)	
High-alloy Steel	180– 300	110 (40-150)	110 (60-180)	110 (60-180)				
Cast Steel	180– 300	110 (40-150)	110 (60-180)	110 (60-180)				
<b>M</b> Ferritic/ Martensitic	150– 270	110 (40-180)				90 (50-150)	90 (30-180)	
Austenitic	150– 270	110 (40-180)				90 (50-150)	90 (30-180)	
Malleable Cast Iron	150– 230	110 (50-180)			130 (50-200)			
<b>K</b> Gray Cast Iron	150– 230	110 (50-180)			130 (50-200)			
Nodular Cast Iron	160– 260	100 (50-150)			100 (50-150)			
Heat-resistant Alloy	130– 400					35 (15-60)	35 (15-70)	
<b>S</b> Titanium Alloys	130– 400					35 (15-60)	35 (15-70)	35 (15-60)