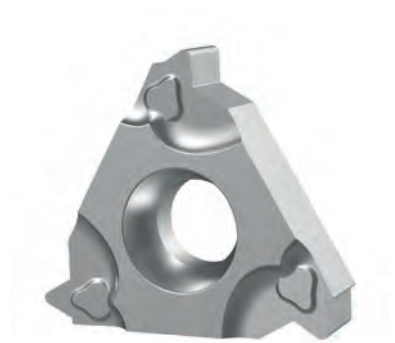




## THREADING

Carbide .175  
Advanced .181  
Holders .185





THREADING Carbide



<b>TPM</b>		<b>CARBIDE</b> External threading				ISO513	HC-PVD													
							JP5125													
<p>3 edges</p>	<b>Size</b>	<b>IC</b>	<b>S</b>	<b>D1</b>	<b>P</b>	80 180														
	<b>16</b>	9.525	3.65	4.00	<b>M</b>	60 140														
						<b>K</b>	50 120													
						<b>N</b>														
						<b>S</b>	20 40													
						<b>H</b>														
GRADE APPLICATION AREA		Stable machining, continuous cut			<b>+</b>															
main application		General machining, light interruption			<b>-</b>															
applicable		Unstable machining, interrupted cut			<b>+</b>															
<b>PARTIAL PROFILE</b>	<b>60° P M K S</b> <p>METRIC AND UNIFIED THREADS</p>	<b>16ER</b>	<b>A60-TPM</b>	RE 0.08	pitch: 0.50÷1.50 mm, 48÷16 TPI	●														
			<b>G60-TPM</b>	RE 0.25	pitch: 1.75÷3.00 mm, 14÷8 TPI	●														
			<b>AG60-TPM</b>	RE 0.08	pitch: 0.50÷3.00 mm, 48÷8 TPI	●														
	<b>55° P M K S</b> <p>WHITWORTH AND GAS THREADS</p>	<b>16ER</b>	<b>A55-TPM</b>	RE 0.08	pitch: 48÷16 TPI	●														
			<b>G55-TPM</b>	RE 0.21	pitch: 14÷8 TPI	●														
			<b>AG55-TPM</b>	RE 0.08	pitch: 48÷8 TPI	●														

● stock standard

TURNING

THREADING

GROOVING

MILLING

DRILLING

ACCESSORIES



TPM	CARBIDE Internal threading				ISO513	HC-PVD														
	Size	IC	S	D1		JPS125														
<p>3 edges</p>					<b>P</b>	80 180														
	<b>11</b>	6.35	3.18	3.20		<b>M</b>	60 140													
	<b>16</b>	9.525	3.65	4.00		<b>K</b>	50 120													
						<b>N</b>														
						<b>S</b>	20 40													
						<b>H</b>														
GRADE APPLICATION AREA		Stable machining, continuous cut			+															
main application		General machining, light interruption			-															
applicable		Unstable machining, interrupted cut			+															
<b>FULL PROFILE</b>  BRITISH STANDARD PIPE TAPERED 55°	<b>16IR</b>	<b>28BSPT-TPM</b>	RE 0.11	pitch: 28 TPI no. of passes 5÷8	●															
		<b>19BSPT-TPM</b>	RE 0.17	pitch: 19 TPI no. of passes 6÷9	●															
		<b>14BSPT-TPM</b>	RE 0.24	pitch: 14 TPI no. of passes 9÷12	●															
		<b>11BSPT-TPM</b>	RE 0.30	pitch: 11 TPI no. of passes 12÷15	●															
<b>PARTIAL PROFILE</b>  METRIC AND UNIFIED THREADS	<b>11IR</b>	<b>A60-TPM</b>	RE 0.08	pitch: 0.50÷1.50 mm, 48÷16 TPI	●															
	<b>16IR</b>	<b>A60-TPM</b>	RE 0.08	pitch: 0.50÷1.50 mm, 48÷16 TPI	●															
		<b>G60-TPM</b>	RE 0.13	pitch: 1.75÷3.00 mm, 14÷8 TPI	●															
		<b>AG60-TPM</b>	RE 0.08	pitch: 0.50÷3.00 mm, 48÷8 TPI	●															
<b>PARTIAL PROFILE</b>  WHITWORTH AND GAS THREADS	<b>11IR</b>	<b>A55-TPM</b>	RE 0.08	pitch: 48÷16 TPI	●															
	<b>16IR</b>	<b>A55-TPM</b>	RE 0.08	pitch: 48÷16 TPI	●															
		<b>G55-TPM</b>	RE 0.21	pitch: 14÷8 TPI	●															
		<b>AG55-TPM</b>	RE 0.08	pitch: 48÷8 TPI	●															

● stock standard

TURNING

THREADING

GROOVING

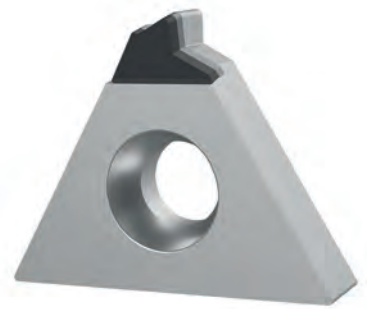
MILLING

DRILLING

ACCESSORIES







THREADING Advanced

# 16ER

DIAMOND-PCBN  
External threading

ISO513

	Size	IC	S	D1	ISO513	DP	BH																	
						ND120	NBH450U																	
					<b>P</b>	140 300	◀ SINTERED POWDER METAL																	
	<b>16</b>	9.525	3.65	4.00	<b>M</b>																			
					<b>K</b>	400 1200																		
					<b>N</b>	500 2000																		
					<b>S</b>																			
					<b>H</b>	60 160																		
GRADE APPLICATION AREA						Stable machining, continuous cut																		
<span style="color: orange;">■</span> main application <span style="color: lightgray;">■</span> applicable						General machining, light interruption																		
						Unstable machining, interrupted cut																		

1 edge

	+ Hardness		- Toughness	
	-		+	

FULL PROFILE	METRIC N H		Pitch	no. of passes	N	H																		
	16ER	ISO																						
	16ER	100ISO	N	pitch: 1.00 mm no. of passes 5÷8		○																		
		H	pitch: 1.00 mm no. of passes 7÷10		○																			
	125ISO	N	pitch: 1.25 mm no. of passes 6÷9		○																			
		H	pitch: 1.25 mm no. of passes 8÷11		○																			
	150ISO	N	pitch: 1.50 mm no. of passes 6÷9		○																			
		H	pitch: 1.50 mm no. of passes 8÷11		○																			
	175ISO	N	pitch: 1.75 mm no. of passes 8÷11		○																			
		H	pitch: 1.75 mm no. of passes 10÷13		○																			
	200ISO	N	pitch: 2.00 mm no. of passes 8÷11		○																			
		H	pitch: 2.00 mm no. of passes 10÷13		○																			
	250ISO	N	pitch: 2.50 mm no. of passes 10÷13		○																			
		H	pitch: 2.50 mm no. of passes 13÷15		○																			
300ISO	N	pitch: 3.00 mm no. of passes 12÷15		○																				
	H	pitch: 3.00 mm no. of passes 14÷17		○																				

○ non-standard stock

<h1>16IR</h1>		<b>DIAMOND-PCBN</b> Internal threading				<b>ISO513</b>	DP	BH													
		Size	IC	S	D1		<b>ND120</b>	<b>NBH450U</b>	◀ SINTERED POWDER METAL												
		<b>16</b>	9.525	3.65	4.00	<b>P</b>	140 300														
						<b>M</b>															
						<b>K</b>	400 1200														
						<b>N</b>	500 2000														
						<b>S</b>															
						<b>H</b>	60 160														
GRADE APPLICATION AREA		Stable machining, continuous cut				+ Hardness - Toughness + 															
main application		General machining, light interruption																			
applicable		Unstable machining, interrupted cut																			
<b>FULL PROFILE</b>	<b>METRIC N H</b>		<b>16IR</b>	<b>100ISO</b>	<b>N</b>	pitch: 1.00 mm no. of passes 5÷8	○														
	<b>H</b>	pitch: 1.00 mm no. of passes 7÷10				○															
	<b>125ISO</b>	<b>N</b>		pitch: 1.25 mm no. of passes 6÷9		○															
		<b>H</b>		pitch: 1.25 mm no. of passes 8÷11			○														
	<b>150ISO</b>	<b>N</b>		pitch: 1.50 mm no. of passes 6÷9		○															
		<b>H</b>		pitch: 1.50 mm no. of passes 8÷11				○													
	<b>175ISO</b>	<b>N</b>		pitch: 1.75 mm no. of passes 8÷11		○															
		<b>H</b>		pitch: 1.75 mm no. of passes 10÷13					○												
	<b>200ISO</b>	<b>N</b>		pitch: 2.00 mm no. of passes 8÷11		○															
		<b>H</b>		pitch: 2.00 mm no. of passes 10÷13						○											
	<b>250ISO</b>	<b>N</b>		pitch: 2.50 mm no. of passes 10÷13		○															
		<b>H</b>		pitch: 2.50 mm no. of passes 13÷15							○										
	<b>300ISO</b>	<b>N</b>		pitch: 3.00 mm no. of passes 12÷15		○															
		<b>H</b>		pitch: 3.00 mm no. of passes 14÷17								○									

○ non-standard stock

TURNING

THREADING

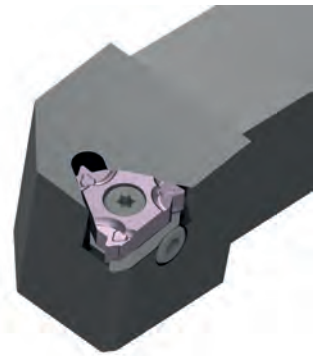
GROOVING

MILLING

DRILLING

ACCESSORIES



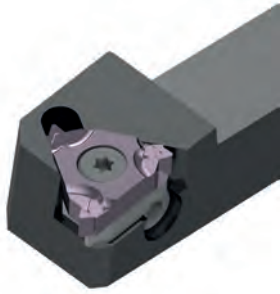
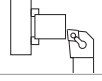


THREADING Holders

TURNING

**16E**

EXTERNAL



Right-hand shown



THREADING

**SE N**

External threading

R L

H

B

WF

LF



MIID

16	NT-SE <sup>R</sup> /.1212H16N	●	○	12	12	12	100	16E <sup>R</sup> /□□□□		
	NT-SE <sup>R</sup> /.1616H16N	○	○	16	16	16	100			

● stock standard, ○ non-standard stock

GROOVING

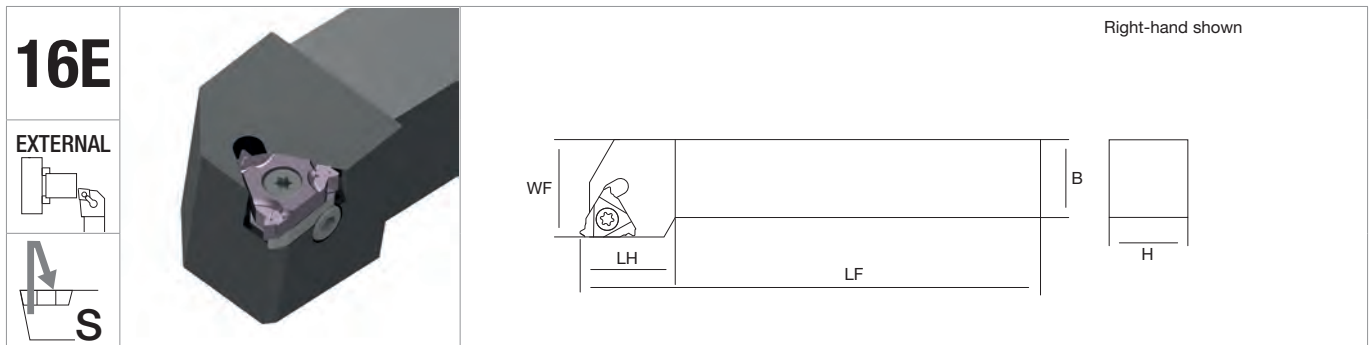
Spare Parts	SHIM	SHIM SCREW	SHIM WRENCH	INSERT SCREW	INSERT WRENCH

NT-SER1212H16N	NT-SH060	NT-ST080	NT-WR025	NT-ST040	NT-FT15
NT-SER1616H16N					
NT-SEL1212H16N	NT-SH065	NT-ST080	NT-WR025	NT-ST040	NT-FT15
NT-SEL1616H16N					

MILLING

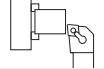
DRILLING

ACCESSORIES



**16E**

EXTERNAL



<p><b>SE</b> External threading</p>		R	L	H	B	WF	LF	LH	KG	MIID	

16	NT-SE%/1616H16	●	●	16	16	20	100	22			
	NT-SE%/2020K16	●	●	20	20	25	125	25		16E <sup>R</sup> /□□□	
	NT-SE%/2525M16	●	●	32	25	32	150	25			

● stock standard

Spare Parts	SHIM	SHIM SCREW	SHIM WRENCH	INSERT SCREW	INSERT WRENCH

NT-SER1616H16	NT-SH060	NT-ST080	NT-WR025	NT-ST040	NT-FT15
NT-SER2020K16					
NT-SER2525M16					
NT-SEL1616H16	NT-SH065	NT-ST080	NT-WR025	NT-ST040	NT-FT15
NT-SEL2020K16					
NT-SEL2525M16					

TURNING

THREADING

GROOVING

MILLING

DRILLING

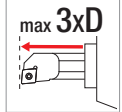
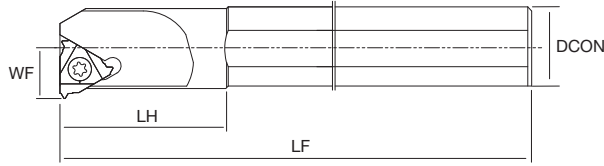
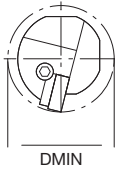
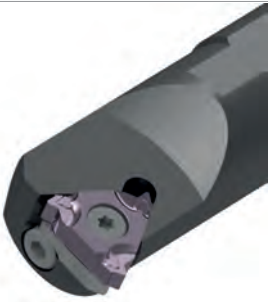
ACCESSORIES

TURNING

**111**  
**161**

Right-hand shown

STEEL



THREADING

**SI**

Internal threading

R L

DMIN

DCON

WF

LF

LH

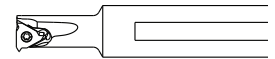


MIID

	NT-SIR1012-11	●	●	10	12	5.2	150	25		111R□□□
11	NT-SIR1216-11*	●		12	16	6.3	150	25		
	NT-SIR1516-11*	●		15	16	7.5	150	25		
	NT-SI <sup>P</sup> /2016-16	●	●	20	16	10	150	35		
	NT-SI <sup>P</sup> /2420S-16	●	●	24	20	12	180	35		
16	NT-SI <sup>P</sup> /3025S-16	●	●	30	25	15	200	35		16 <sup>P</sup> /□□□
	NT-SI <sup>P</sup> /3732S-16	●	●	37	32	18.5	250	35		

● stock standard

\*Reduced neck



GROOVING

Spare Parts	SHIM	SHIM SCREW	SHIM WRENCH	INSERT SCREW	INSERT WRENCH

MILLING


NT-SIR1012-11					
NT-SIR1216-11	-	-	-	NT-ST041	NT-FT08
NT-SIR1516-11					
NT-SIR2016-16				NT-ST030	
NT-SIR2420S-16					NT-FT15
NT-SIR3025S-16	NT-SH065	NT-ST080	NT-WR025	NT-ST040	
NT-SIR3732S-16					
NT-SIL2016-16				NT-ST030	
NT-SIL2420S-16					NT-FT15
NT-SIL3025S-16	NT-SH060	NT-ST080	NT-WR025	NT-ST040	
NT-SIL3732S-16					

DRILLING


ACCESSORIES




111  
161

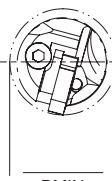


INTERNAL

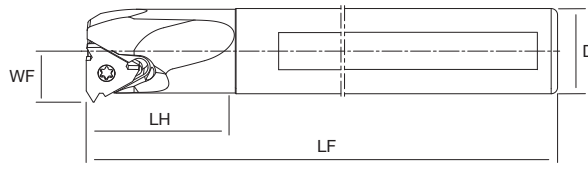


S






DMIN

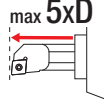


WF LH LF DCON


Right-hand shown



VORTEX



max 5xD



INTERNAL COOLANT

## V SIR

Internal threading

			DMIN	DCON	WF	LF	LH	KG	MIID
--	--	--	------	------	----	----	----	----	------

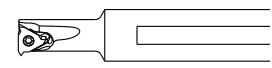
11	NT-V10M-SIR11-10	●	10	10	5.2	150	25		11IR000
	NT-V16M-SIR11-12*	●	12	16	6.3	150	25		
	NT-V16M-SIR11-15*	●	15	16	7.5	150	25		
16	NT-V16M-SIR16-20	●	20	16	10	150	35		16IR000
	NT-V20Q-SIR16-24	●	24	20	12	180	35		
	NT-V25R-SIR16-30	●	30	25	15	200	35		
	NT-V32S-SIR16-37	●	37	32	18.5	250	35		

● stock standard

\*Reduced neck

Spare Parts	SHIM	SHIM SCREW	SHIM WRENCH	INSERT SCREW	INSERT WRENCH
NT-V10M-SIR11-10					

NT-V10M-SIR11-10	-	-	-	NT-ST041	NT-FT08
NT-V16M-SIR11-12					
NT-V16M-SIR11-15					
NT-V16M-SIR16-20	NT-SH065	NT-ST080	NT-WR025	NT-ST030	NT-FT15
NT-V20Q-SIR16-24					
NT-V25R-SIR16-30					
NT-V32S-SIR16-37					



- TURNING
- THREADING
- GROOVING
- MILLING
- DRILLING
- ACCESSORIES